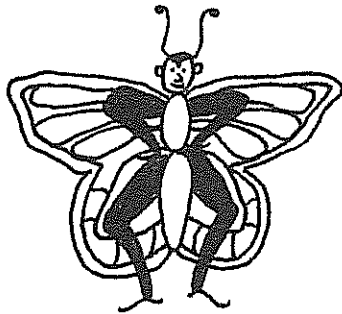


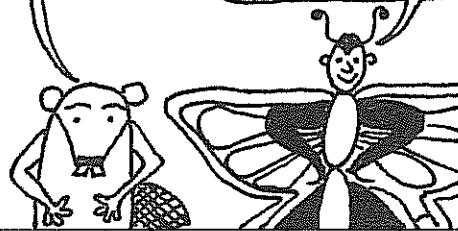
Mike The Monarch

*Thistle killya**



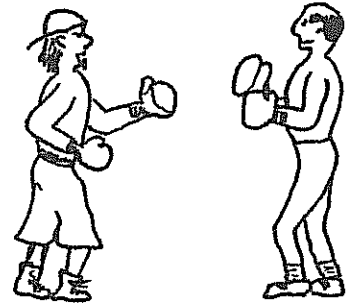
Mike, I really like it when you have puns in your cartoons.

Are you sure? Well, you asked for it!



Why do they call those tough kids The Ashleaf Maple Boys?

Because they box elders!

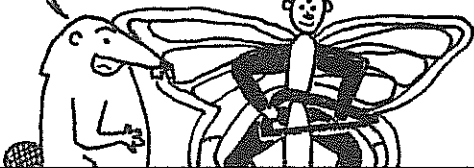


That's a nice saw!

I just had it tuned—
It's a C saw!

Can you play Irish music on it?

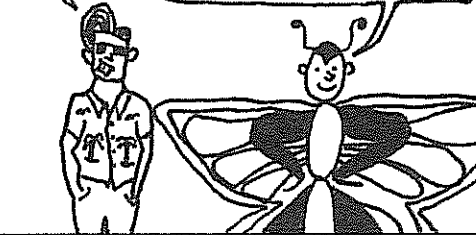
No—that would be a jig saw!



I found a toothwort in the woods!

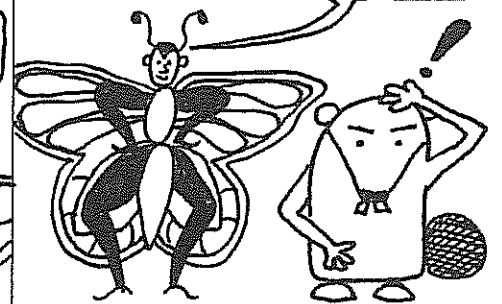
What's a toothwort?

To da toot' fairy,
it's wort' about a buck!



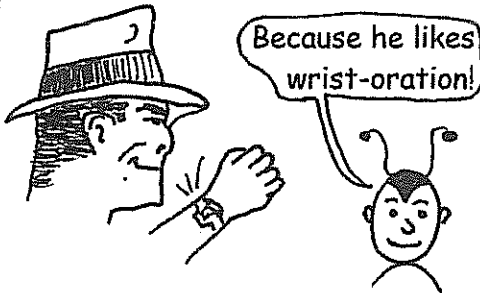
How can you identify a dogwood?

By the bark!



Why is Dick Tracy listening to a speech on his two-way radio?

Because he likes wrist-oration!



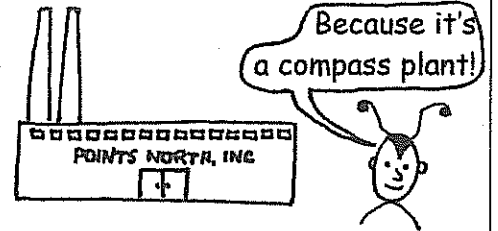
I can identify any tree in that brush pile...

Because after the burn,
it's sure to be...ash!



Why did that factory order so many magnetized needles?

Because it's a compass plant!



Why can't I find a perch in this tree?

Because it's a basswood!

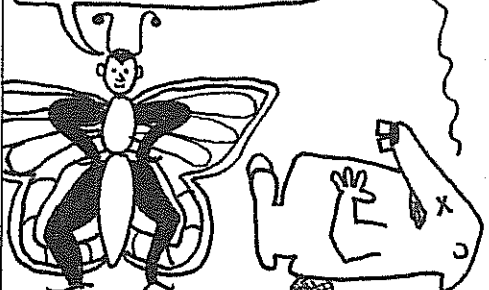


I wish you wouldn't make me eat jams and jellies!

I thought you liked forced preserves!



We hoped that these puns would make someone laugh... but no pun in ten did!



*"Thistle killya" is a real plant—no kidding! Look it up in *Plants of the Chicago Region* by Swink & Wilhelm!